

Please check the examination details below before entering your candidate information

Candidate surname

Other names

Centre Number

Candidate Number

| | | | | |
|--|--|--|--|--|
| | | | | |
|--|--|--|--|--|

| | | | | |
|--|--|--|--|--|
| | | | | |
|--|--|--|--|--|

Pearson Edexcel International Advanced Level

Wednesday 10 May 2023

Morning (Time: 1 hour 30 minutes)

Paper
reference

WCH11/01

Chemistry

International Advanced Subsidiary/Advanced Level

**UNIT 1: Structure, Bonding and Introduction to
Organic Chemistry**

You must have:

Scientific calculator

Total Marks

Instructions

- Use **black** ink or ball-point pen.
- If pencil is used for diagrams/sketches/graphs it must be dark (HB or B).
- **Fill in the boxes** at the top of this page with your name, centre number and candidate number.
- Answer **all** questions.
- Answer the questions in the spaces provided
– *there may be more space than you need.*

Information

- The total mark for this paper is 80.
- The marks for **each** question are shown in brackets
– *use this as a guide as to how much time to spend on each question.*
- You will be assessed on your ability to organise and present information, ideas, descriptions and arguments clearly and logically, including your use of grammar, punctuation and spelling.
- A Periodic Table is printed on the back cover of this paper.

Advice

- Read each question carefully before you start to answer it.
- Show all your working in calculations and include units where appropriate.
- Try to answer every question.
- Check your answers if you have time at the end.

Turn over ►

P71860A

©2023 Pearson Education Ltd.
N:1/1/1/1/




Pearson

SECTION A

Answer ALL the questions in this section.

You should aim to spend no more than 20 minutes on this section.

For each question, select one answer from A to D and put a cross in the box . If you change your mind, put a line through the box and then mark your new answer with a cross .

1 Which compound has the greatest covalent character?

- A MgBr₂
- B MgF₂
- C NaBr
- D NaF

(Total for Question 1 = 1 mark)

2 Which has the smallest ionic radius?

- A F⁻
- B Mg²⁺
- C Na⁺
- D O²⁻

(Total for Question 2 = 1 mark)

3 The first seven ionisation energies, in kJ mol⁻¹, of an element are shown.

1010, 1900, 2910, 4960, 6270, 21 300, 25 400

In which group of the Periodic Table is this element located?

- A Group 3
- B Group 4
- C Group 5
- D Group 6

(Total for Question 3 = 1 mark)

Use this space for any rough working. Anything you write in this space will gain no credit.



4 What is the electronic configuration of an oxygen atom in its ground state?

| | 1s | 2s | 2p _x | 2p _y | 2p _z | 3s |
|----------------------------|----|----|-----------------|-----------------|-----------------|----|
| <input type="checkbox"/> A | ↑↓ | ↑↓ | ↑↓ | ↑↓ | | |
| <input type="checkbox"/> B | ↑↓ | ↑↓ | ↑↑ | ↑ | ↑ | |
| <input type="checkbox"/> C | ↑↓ | ↑↓ | ↑ | ↑ | ↑ | ↑ |
| <input type="checkbox"/> D | ↑↓ | ↑↓ | ↑↓ | ↑ | ↑ | |

(Total for Question 4 = 1 mark)

5 Which property shows a **general decrease** across the Periodic Table from sodium to chlorine?

- A atomic radius
- B electronegativity
- C first ionisation energy
- D melting temperature

(Total for Question 5 = 1 mark)

6 The first ionisation energy of sulfur is lower than that of phosphorus.

Which is the best explanation for this?

- A the atomic radius of sulfur is greater than that of phosphorus
- B the electronegativity of sulfur is greater than that of phosphorus
- C the repulsion between the outer electrons of sulfur is greater than that of phosphorus
- D the shielding by the inner shell electrons of sulfur is greater than that of phosphorus

(Total for Question 6 = 1 mark)

Use this space for any rough working. Anything you write in this space will gain no credit.

DO NOT WRITE IN THIS AREA

DO NOT WRITE IN THIS AREA

DO NOT WRITE IN THIS AREA



7 1 kg of seawater contains 64 mg of bromide ions.

[A_r of Br = 80 Avogadro constant, $L = 6.0 \times 10^{23} \text{ mol}^{-1}$]

(a) What is the concentration of bromide ions in parts per million (ppm) by mass? (1)

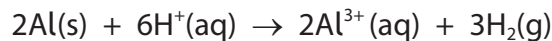
- A 0.80
- B 64
- C 800
- D 64 000

(b) How many bromide ions are in 500 g of the sample? (1)

- A 2.4×10^{20}
- B 4.8×10^{20}
- C 1.9×10^{22}
- D 3.8×10^{22}

(Total for Question 7 = 2 marks)

8 0.15 mol of aluminium is added to 120 cm^3 of 1.50 mol dm^{-3} hydrochloric acid.



The amount of **unused** reactant is

- A 0.06 mol aluminium
- B 0.09 mol aluminium
- C 0.03 mol hydrochloric acid
- D 0.13 mol hydrochloric acid

(Total for Question 8 = 1 mark)

Use this space for any rough working. Anything you write in this space will gain no credit.



9 An organic compound contains 24.2% carbon, 4.00% hydrogen and 71.8% chlorine by mass.

[A_r values: H = 1.0 C = 12.0 Cl = 35.5]

What is the empirical formula of the compound?

- A CHCl
- B CH₂Cl
- C C₂H₄Cl₂
- D C₄H₄Cl₄

(Total for Question 9 = 1 mark)

10 Which solution contains the **smallest** number of ions?

- A 500 cm³ of 0.06 mol dm⁻³ Ca(NO₃)₂(aq)
- B 500 cm³ of 0.09 mol dm⁻³ KI(aq)
- C 250 cm³ of 0.12 mol dm⁻³ BaCl₂(aq)
- D 250 cm³ of 0.09 mol dm⁻³ (NH₄)₂SO₄(aq)

(Total for Question 10 = 1 mark)

11 A piece of filter paper is soaked in water and attached to a microscope slide.

A few crystals of green copper(II) chromate(VI) are placed in the centre of the filter paper.

The filter paper is connected to a DC supply of 20V.

What colours are observed on the paper after a few minutes?



- | | | |
|----------------------------|--------|--------|
| <input type="checkbox"/> A | blue | yellow |
| <input type="checkbox"/> B | green | blue |
| <input type="checkbox"/> C | yellow | green |
| <input type="checkbox"/> D | yellow | blue |

(Total for Question 11 = 1 mark)

DO NOT WRITE IN THIS AREA

DO NOT WRITE IN THIS AREA

DO NOT WRITE IN THIS AREA



12 The melting temperature of beryllium is greater than that of barium.

What is the best explanation for this statement?

- A beryllium ions are smaller than barium ions
- B beryllium atoms have fewer outer shell electrons than barium atoms
- C beryllium ions have a smaller charge density than barium ions
- D beryllium atoms have a higher electronegativity than barium atoms

(Total for Question 12 = 1 mark)

13 Which molecule has the largest bond angle?

- A BF_3
- B CF_4
- C H_2O
- D NH_3

(Total for Question 13 = 1 mark)

14 Which molecule is polar?

- A CO_2
- B SF_6
- C SO_2
- D SiCl_4

(Total for Question 14 = 1 mark)

15 The reaction of methane with chlorine is a free radical substitution.

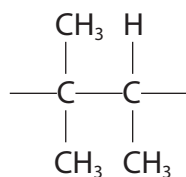
Which termination step does **not** occur?

- A $\text{CH}_3\cdot + \text{CH}_3\cdot \rightarrow \text{C}_2\text{H}_6$
- B $\text{CH}_3\cdot + \text{Cl}\cdot \rightarrow \text{CH}_3\text{Cl}$
- C $\text{CH}_3\cdot + \text{H}\cdot \rightarrow \text{CH}_4$
- D $\text{Cl}\cdot + \text{Cl}\cdot \rightarrow \text{Cl}_2$

(Total for Question 15 = 1 mark)



16 The repeat unit of a polymer is shown.

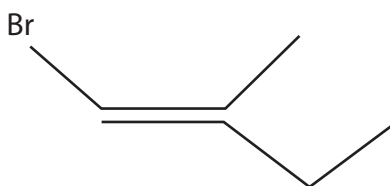


Which is the name of the monomer that forms this polymer?

- A 1,1,2-trimethylethene
- B 1,1-dimethylpropene
- C 2-methylbut-2-ene
- D 3-methylbut-2-ene

(Total for Question 16 = 1 mark)

17 What is the IUPAC name for the compound shown?



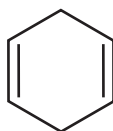
- A *E*-1-bromo-2-methylbut-1-ene
- B *Z*-1-bromo-2-methylbut-1-ene
- C *E*-1-bromo-2-ethyl-2-methylethene
- D *Z*-1-bromo-2-ethylpropene

(Total for Question 17 = 1 mark)

Use this space for any rough working. Anything you write in this space will gain no credit.



18 The skeletal formula of cyclohexa-1,4-diene is shown.



DO NOT WRITE IN THIS AREA

DO NOT WRITE IN THIS AREA

DO NOT WRITE IN THIS AREA

(a) The total number of σ (sigma) bonds in this molecule is

(1)

- A 4
- B 6
- C 12
- D 14

(b) 1.60 g of cyclohexa-1,4-diene is reduced to cyclohexane by reacting it with hydrogen gas.

[The molar volume of a gas is $24.0 \text{ dm}^3 \text{ mol}^{-1}$ at room temperature and pressure (r.t.p.)

M_r of cyclohexa-1,4-diene = 80]

What is the minimum volume, in dm^3 , of hydrogen needed at r.t.p.?

(1)

- A 0.0400
- B 0.480
- C 0.960
- D 1.92

(Total for Question 18 = 2 marks)

TOTAL FOR SECTION A = 20 MARKS



SECTION B

Answer ALL the questions. Write your answers in the spaces provided.

19 This question is about mass spectrometry and the shapes of molecules.

(a) In a mass spectrometer vaporised atoms are ionised, and the ions formed are accelerated, deflected and detected.

(i) State how atoms are ionised in the mass spectrometer.

(1)

.....

.....

.....

(ii) State how the ions formed are accelerated.

(1)

.....

.....

(iii) Explain why isotopes of an element have the same chemical reactions but their ions are deflected differently in a mass spectrometer.

(2)

.....

.....

.....

.....

.....

(b) Data from mass spectra may be used to determine the relative atomic masses of elements.

(i) State what is meant by relative atomic mass.

(2)

.....

.....

.....

.....

DO NOT WRITE IN THIS AREA

DO NOT WRITE IN THIS AREA

DO NOT WRITE IN THIS AREA



P 7 1 8 6 0 A 0 9 2 4

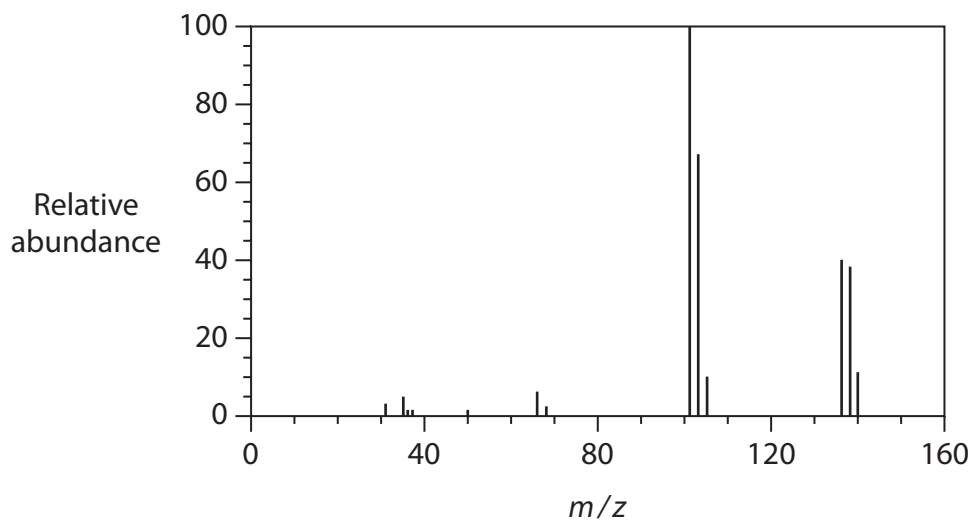
(ii) A sample of chlorine contains 75.53 % of ^{35}Cl and 24.47 % of ^{37}Cl .

Calculate the relative atomic mass of this sample of chlorine, giving your answer to **four** significant figures.

(2)

(c) The mass spectrum of phosphorus trichloride, PCl_3 , is shown.

Phosphorus has only one isotope, ^{31}P .



(i) There are three peaks in the region of $m/z = 101-105$.

Complete the table to show the ions responsible for these peaks.

(2)

| m/z | Formula of ion | Relative peak height |
|-------|----------------|----------------------|
| 101 | | 9 |
| 103 | | 6 |
| 105 | | 1 |



(ii) Show that the relative peak heights given in the table are consistent with the isotopic ratio of ^{35}Cl to ^{37}Cl being 3 : 1.

(2)

<https://britishstudentroom.com/>

DO NOT WRITE IN THIS AREA

DO NOT WRITE IN THIS AREA

DO NOT WRITE IN THIS AREA

.....

.....

.....

(d) (i) Draw a dot-and-cross diagram of a PCl_3 molecule.
Show outer electrons only.

(2)

(ii) Explain the shape of a PCl_3 molecule.

(3)

.....

.....

.....

.....

.....

.....

.....

(Total for Question 19 = 17 marks)



P 7 1 8 6 0 A 0 1 1 2 4

20 (a) Barium chloride, BaCl_2 , can be prepared by the reaction of barium carbonate with hydrochloric acid.



(i) Write the ionic equation for this reaction.
State symbols are not required.

(1)

(ii) Calculate the atom economy by mass for this preparation of barium chloride.

[A_r values: H = 1.0 C = 12.0 O = 16.0 Cl = 35.5 Ba = 137.3]

(2)

DO NOT WRITE IN THIS AREA

DO NOT WRITE IN THIS AREA

DO NOT WRITE IN THIS AREA



- (iii) Barium chloride has a melting temperature of 962 °C.
Caesium chloride has a melting temperature of 646 °C.

Explain, by considering the ions involved, the difference between the melting temperatures of these Period 6 chlorides.

(4)

.....

.....

.....

.....

.....

.....

.....

.....

.....

.....

- (iv) Covalent and ionic bonding are the extremes of a continuum of bonding type.

Explain the difference in bonding between barium chloride and beryllium chloride, using the electronegativity values shown.

| Element | Electronegativity |
|---------|-------------------|
| Ba | 0.9 |
| Be | 1.5 |
| Cl | 3.0 |

(2)

.....

.....

.....

.....

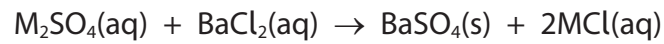
DO NOT WRITE IN THIS AREA

DO NOT WRITE IN THIS AREA

DO NOT WRITE IN THIS AREA



(b) Barium chloride reacts with Group 1 sulfates, M_2SO_4 .



A solution is made by dissolving 7.98 g of a Group 1 sulfate in deionised water.

Excess aqueous barium chloride is added to this solution and the precipitate is filtered, dried and weighed.

The mass of the barium sulfate precipitate is 10.72 g.

Identify the Group 1 element.

[A_r values: Ba = 137.3 S = 32.1 O = 16.0]

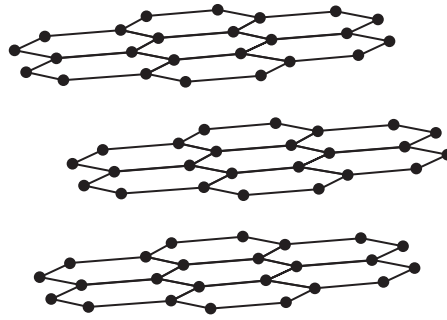
(4)

(Total for Question 20 = 13 marks)



21 Graphite electrodes are used in the extraction of aluminium by the electrolysis of aluminium oxide, Al_2O_3 , dissolved in a solvent (molten cryolite) at a temperature of 950°C .

- (a) Explain how the structure and bonding in graphite make it suitable for this application.
Refer to the diagram in your answer.



graphite

(3)

.....

.....

.....

.....

.....

.....

.....

DO NOT WRITE IN THIS AREA

DO NOT WRITE IN THIS AREA

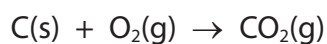
DO NOT WRITE IN THIS AREA



(b) The half-equations for the electrolysis reactions are shown.



The oxygen produced reacts with the graphite electrode.



(i) Calculate the maximum volume, in dm^3 , of CO_2 , measured at r.t.p. which could be produced when 1.00 kg aluminium is extracted using this process.

[The molar volume of a gas is $24.0 \text{ dm}^3 \text{ mol}^{-1}$ at r.t.p.]

(4)



(ii) Every year in the United Kingdom, about 7.2 billion aluminium cans are recycled.

Suggest three ways this recycling reduces energy consumption.

(3)

<https://britishstudentroom.com/>

.....

.....

.....

.....

.....

.....

.....

.....

.....

.....

.....

.....

.....

.....

(Total for Question 21 = 10 marks)

DO NOT WRITE IN THIS AREA

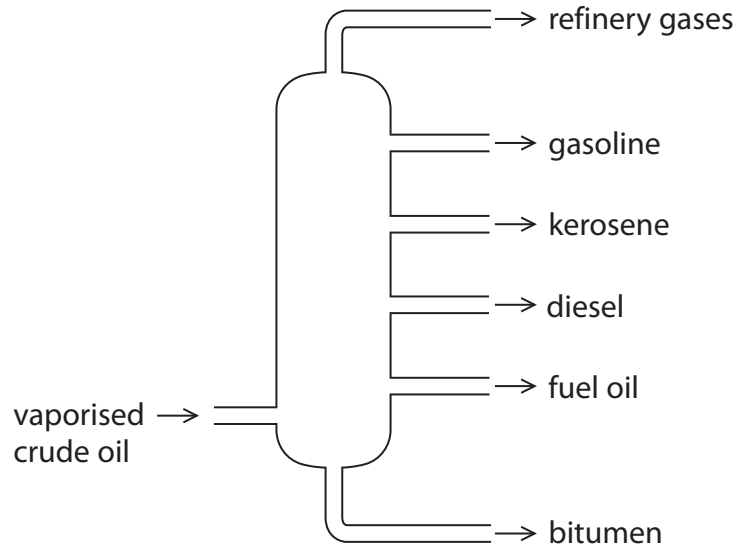
DO NOT WRITE IN THIS AREA

DO NOT WRITE IN THIS AREA



22 Crude oil is mainly a mixture of saturated hydrocarbons that can be separated by fractional distillation.

The diagram shows, in a simplified form, the products of fractional distillation.



(a) (i) State what is meant by a saturated hydrocarbon.

(2)

.....

.....

.....

.....

(ii) Describe how the fractions in crude oil are separated during fractional distillation.

(2)

.....

.....

.....

.....



- (b) Butane, C_4H_{10} , is found in the refinery gases fraction of crude oil.
It is used as a propellant in pharmaceutical inhalers.
An inhaler that provides a total of 120 doses contains 1.55 g of butane.

Calculate the volume, in cm^3 , of propellant used for each dose
at $25^\circ C$ and 100 kPa.

Use the ideal gas equation and give your answer to an appropriate number of
significant figures.

$$[pV = nRT \quad R = 8.31 \text{ J K}^{-1} \text{ mol}^{-1}]$$

(5)

DO NOT WRITE IN THIS AREA

DO NOT WRITE IN THIS AREA

DO NOT WRITE IN THIS AREA



(c) Octane, C_8H_{18} , is found in the gasoline fraction of crude oil.

(i) Write an equation for the complete combustion of octane. Include state symbols.

(2)

(ii) Give **two** reasons why alternative fuels, such as bioethanol, are being developed to replace those produced from crude oil.

(2)

.....

.....

.....

.....

.....

.....

(iii) Straight-chain alkanes, such as octane, are converted into branched-chain alkanes to improve the performance of petrol in car engines.

Name this conversion process.

(1)

(iv) Give an equation using skeletal formulae for the conversion of octane into 2,5-dimethylhexane. State symbols are not required.

(1)



(d) In steam cracking, a mixture of hydrocarbons and steam is heated to 850°C for a very short time in the absence of oxygen.

(i) Give a reason why oxygen should be excluded during steam cracking.

(1)

(ii) Ethene is the major product.

State one use of ethene.

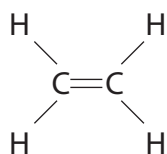
(1)

(e) Ethene reacts with hydrogen bromide to form bromoethane.

Draw the mechanism for this reaction.

Include curly arrows, and relevant lone pairs and dipoles.

(3)



(Total for Question 22 = 20 marks)

TOTAL FOR SECTION B = 60 MARKS
TOTAL FOR PAPER = 80 MARKS



BLANK PAGE



DO NOT WRITE IN THIS AREA

DO NOT WRITE IN THIS AREA

DO NOT WRITE IN THIS AREA

<https://britishstudentroom.com/>

BLANK PAGE



P 7 1 8 6 0 A 0 2 3 2 4

The Periodic Table of Elements

1 2 3 4 5 6 7 0 (8) (18)

1.0
H
hydrogen
1

Key
relative atomic mass
atomic symbol
name
atomic (proton) number

| | | | | | | | | | | | | | | | | | |
|--------------------------------------|--------------------------------------|--|--|--------------------------------------|---|---------------------------------------|---------------------------------------|---|---|--|---|--------------------------------------|--------------------------------------|--------------------------------------|---------------------------------------|--------------------------------------|------------------------------------|
| (1) | (2) | (3) | (4) | (5) | (6) | (7) | (8) | (9) | (10) | (11) | (12) | (13) | (14) | (15) | (16) | (17) | (18) |
| 6.9 Li lithium 3 | 9.0 Be beryllium 4 | 45.0 Sc scandium 21 | 47.9 Ti titanium 22 | 50.9 V vanadium 23 | 52.0 Cr chromium 24 | 54.9 Mn manganese 25 | 55.8 Fe iron 26 | 58.9 Co cobalt 27 | 58.7 Ni nickel 28 | 63.5 Cu copper 29 | 65.4 Zn zinc 30 | 10.8 B boron 5 | 12.0 C carbon 6 | 14.0 N nitrogen 7 | 16.0 O oxygen 8 | 19.0 F fluorine 9 | 4.0 He helium 2 |
| 23.0 Na sodium 11 | 24.3 Mg magnesium 12 | 88.9 Y yttrium 39 | 91.2 Zr zirconium 40 | 92.9 Nb niobium 41 | 95.9 Mo molybdenum 42 | [98] Tc technetium 43 | 101.1 Ru ruthenium 44 | 102.9 Rh rhodium 45 | 106.4 Pd palladium 46 | 107.9 Ag silver 47 | 112.4 Cd cadmium 48 | 27.0 Al aluminium 13 | 28.1 Si silicon 14 | 31.0 P phosphorus 15 | 32.1 S sulfur 16 | 35.5 Cl chlorine 17 | 39.9 Ar argon 18 |
| 39.1 K potassium 19 | 40.1 Ca calcium 20 | 87.6 Sr strontium 38 | 88.9 Y yttrium 39 | 91.2 Zr zirconium 40 | 95.9 Mo molybdenum 42 | [98] Tc technetium 43 | 101.1 Ru ruthenium 44 | 102.9 Rh rhodium 45 | 106.4 Pd palladium 46 | 107.9 Ag silver 47 | 112.4 Cd cadmium 48 | 69.7 Ga gallium 31 | 72.6 Ge germanium 32 | 74.9 As arsenic 33 | 79.0 Se selenium 34 | 79.9 Br bromine 35 | 83.8 Kr krypton 36 |
| 85.5 Rb rubidium 37 | 87.6 Sr strontium 38 | 138.9 La* lanthanum 57 | 178.5 Hf hafnium 72 | 180.9 Ta tantalum 73 | 183.8 W tungsten 74 | 186.2 Re rhenium 75 | 190.2 Os osmium 76 | 192.2 Ir iridium 77 | 195.1 Pt platinum 78 | 197.0 Au gold 79 | 200.6 Hg mercury 80 | 114.8 In indium 49 | 118.7 Sn tin 50 | 121.8 Sb antimony 51 | 127.6 Te tellurium 52 | 126.9 I iodine 53 | 131.3 Xe xenon 54 |
| 132.9 Cs caesium 55 | 137.3 Ba barium 56 | 138.9 La* lanthanum 57 | 178.5 Hf hafnium 72 | 180.9 Ta tantalum 73 | 183.8 W tungsten 74 | 186.2 Re rhenium 75 | 190.2 Os osmium 76 | 192.2 Ir iridium 77 | 195.1 Pt platinum 78 | 197.0 Au gold 79 | 200.6 Hg mercury 80 | 204.4 Tl thallium 81 | 207.2 Pb lead 82 | 209.0 Bi bismuth 83 | [209] Po polonium 84 | [210] At astatine 85 | [222] Rn radon 86 |
| [223] Fr francium 87 | [226] Ra radium 88 | [227] Ac* actinium 89 | [261] Rf rutherfordium 104 | [262] Db dubnium 105 | [266] Sg seaborgium 106 | [264] Bh bohrium 107 | [277] Hs hassium 108 | [268] Mt meitnerium 109 | [271] Ds darmstadtium 110 | [272] Rg roentgenium 111 | Elements with atomic numbers 112-116 have been reported but not fully authenticated | | | | | | |

* Lanthanide series

* Actinide series

| | | | | | | | | | | | | | |
|-----------------------------------|--|-------------------------------------|---------------------------------------|---------------------------------------|---------------------------------------|--------------------------------------|---------------------------------------|---|---|--------------------------------------|--|---------------------------------------|---|
| 140 Ce cerium 58 | 141 Pr praseodymium 59 | 144 Nd neodymium 60 | 147 Pm promethium 61 | 150 Sm samarium 62 | 152 Eu europium 63 | 157 Gd gadolinium 64 | 159 Tb terbium 65 | 163 Dy dysprosium 66 | 165 Ho holmium 67 | 167 Er erbium 68 | 169 Tm thulium 69 | 173 Yb ytterbium 70 | 175 Lu lutetium 71 |
| 232 Th thorium 90 | [231] Pa protactinium 91 | 238 U uranium 92 | [237] Np neptunium 93 | [242] Pu plutonium 94 | [243] Am americium 95 | [247] Cm curium 96 | [245] Bk berkelium 97 | [251] Cf californium 98 | [254] Es einsteinium 99 | [253] Fm fermium 100 | [256] Md mendelevium 101 | [254] No nobelium 102 | [257] Lr lawrencium 103 |

<https://britishstudentpool.com/>

DO NOT WRITE IN THIS AREA

DO NOT WRITE IN THIS AREA

DO NOT WRITE IN THIS AREA

